



Asphalt Batch Mix Plant

UNIBLACK | Global Series

Capacity Range : **240 - 320 TPH**



RUGGED | ROBUST | RELIABLE

www.alltech-group.com

Committed to Excellence through Rugged, Robust & Reliable Solutions

Alltech India Limited (Formerly Alltech Industries India Pvt. Ltd.) stands at the forefront of road and civil construction machinery manufacturing, committed to delivering rugged, robust, and reliable solutions engineered for long-term performance. With a strong foundation in mechanical design and production engineering, we specialize in the development of advanced asphalt mixing plants and allied equipment tailored to meet the dynamic requirements of infrastructure projects worldwide.

Our integrated manufacturing facility is equipped with CNC-enabled fabrication systems, precision machining units, Special Purpose Machines (SPMs), and in-house testing facility. Each product is developed with compliance to global standards, ensuring strict adherence to quality, safety, and operational efficiency. From high-performance asphalt batch mix plants to innovative bitumen processing systems, our solutions are engineered to perform consistently in demanding site conditions while optimizing fuel consumption, mix accuracy, and lifecycle cost.



Vision

To be India's most prominent trusted brand for road construction & maintenance machinery



Mission

Nation building by providing & developing new products for road Construction & maintenance.



Values

Customer-First Mind-Set
Quality and Attention to Detail
Proactive about Problem-Solving
Innovative & Creative

400+
Customers

750+
Installations

30+
Countries



**State-of-the-art
Manufacturing Facility**



MEET THE BEAST OF HIGH-CAPACITY ASPHALT PRODUCTION
Strength. Quality. Endurance.



Market Leaders

For 200+ TPH Asphalt Batch Mix Plant Category in India



Rugged Design

Proven Design Ensuring Reliability in Prolonged Usage.



Maximised Profits

With Coal Fire Burner & Organic Heater for Bitumen Heating

Most
**Advanced
ABMP**

UNIBLACK | GLOBAL SERIES

Higher Capacity Plants **240 TPH | 320 TPH**

Reclaimed Asphalt Pavement (RAP) Addition up to **60%**

Automation Technology **CYBERMIX™**

Flexibility in Fuel **Solid, Liquid, Gas**

Retrofitting Options:
Additive Dosing System, UNIFOAM System, Stone Matrix Asphalt (SMA) & More.



DELHI-NCR



KOTA



SITAMAU



AHMEDABAD



TELANGANA



AHMEDNAGAR



MANDSAUR

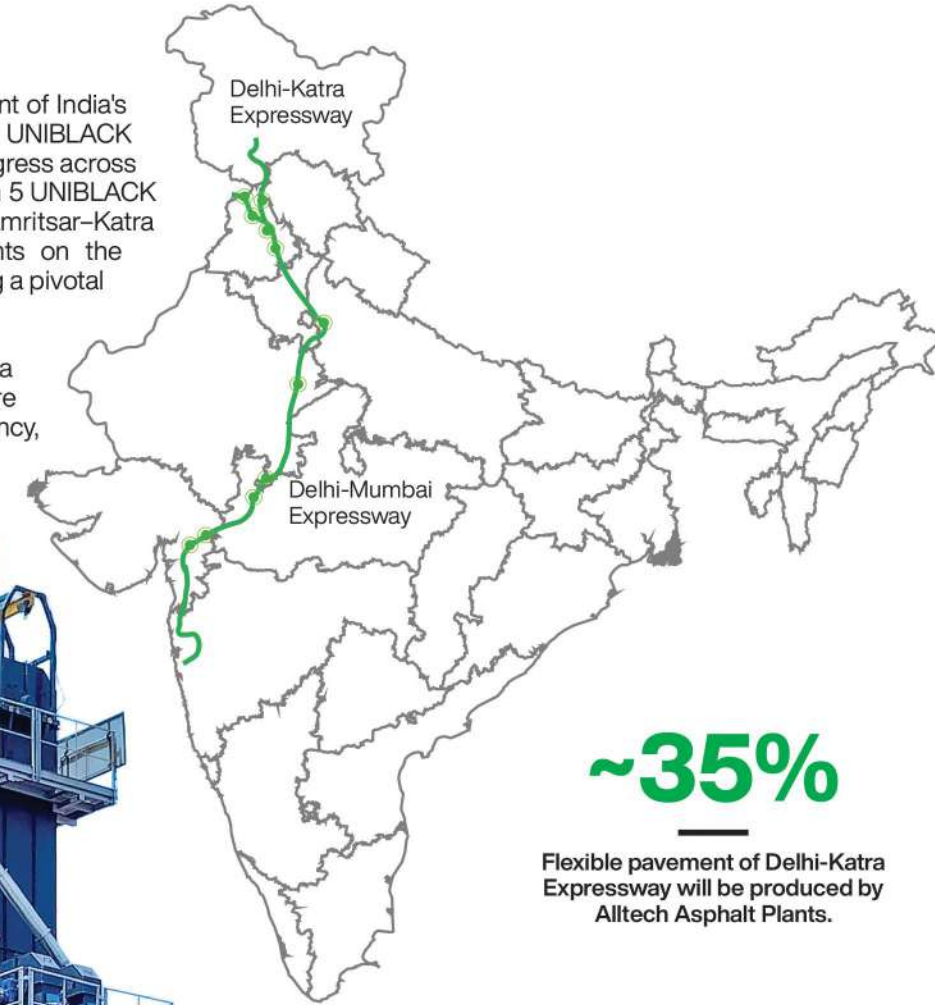


LUDHIANA

Alltech UNIBLACK On India's Iconic Road Projects

At Alltech, we are proud to be at the forefront of India's infrastructure revolution. Our cutting-edge UNIBLACK 3000 asphalt plants are actively driving progress across the nation's most prestigious highways. With 5 UNIBLACK 3000 plants deployed on the Delhi-Amritsar-Katra Expressway and 6 more UNIBLACK plants on the Delhi-Mumbai Expressway, Alltech is playing a pivotal role in shaping tomorrow's India.

From connecting cities to supporting mega infrastructure projects, Alltech plants are engineered to perform with precision, efficiency, and consistency — laying the foundation for a stronger, faster, and better-connected nation.



~35%

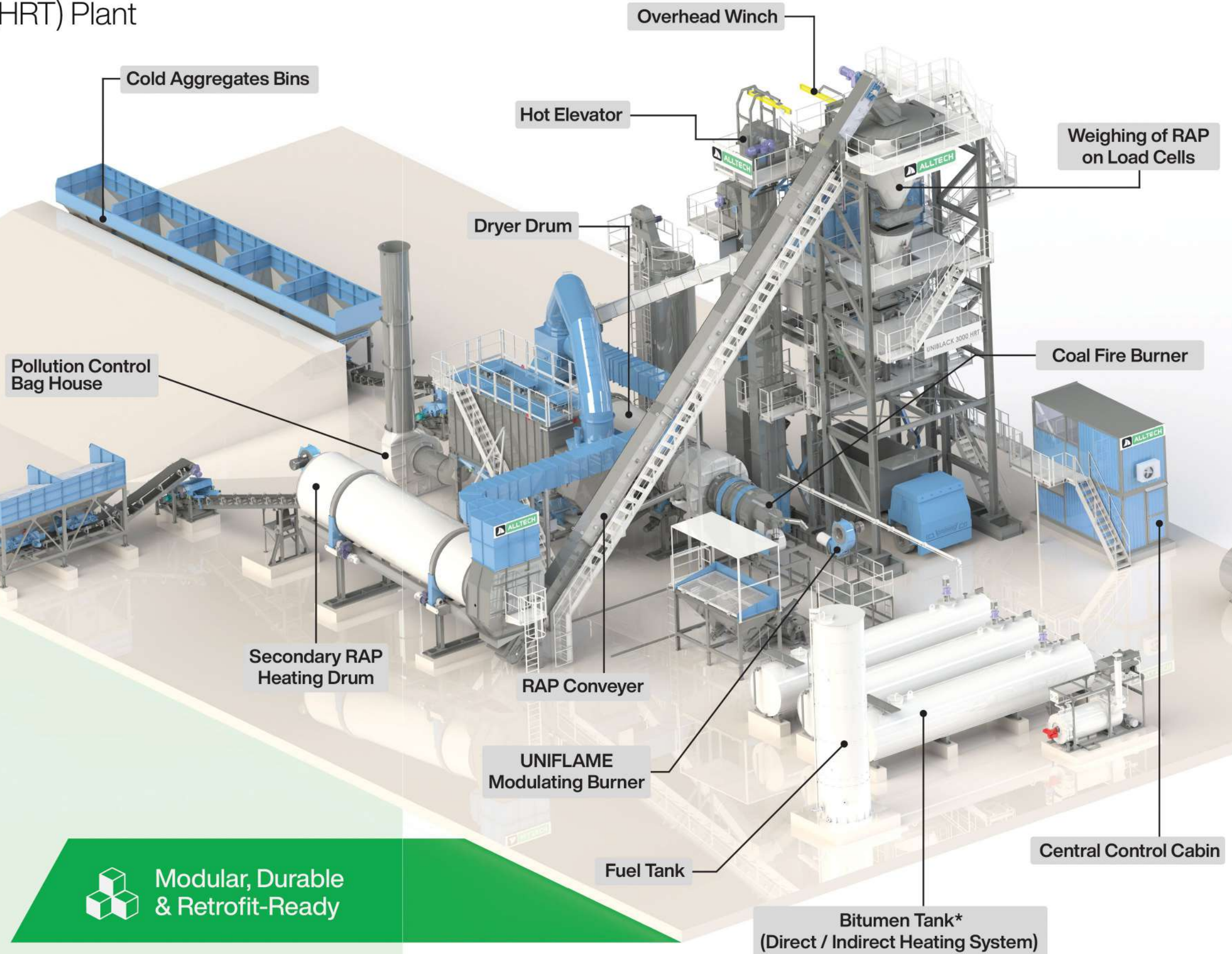
Flexible pavement of Delhi-Katra Expressway will be produced by Alltech Asphalt Plants.



UNIBLACK | HRT Series

High Recycling Technology (HRT) Plant

Precision.
Performance.
Sustainability.



High RAP Utilization

- Capable of processing up to 60% Reclaimed Asphalt Pavement (RAP) while maintaining high-quality output.

Precise Temperature Control

- Maintains optimal mixing temperatures for virgin and recycled materials to ensure consistent quality.

Smart Control System

- Advanced user interface for real-time monitoring, data tracking, and streamlined plant operations.

Additive Compatibility

- Supports integration with rejuvenators, UNIFOAM bitumen foaming, SMA fiber dosing, and more.

Low Maintenance

- Built with durable, wear-resistant components for long service life and minimal downtime.



**Modular, Durable
& Retrofit-Ready**

UNIBLACK Smart Retrofitting Options

Optimal Efficiency

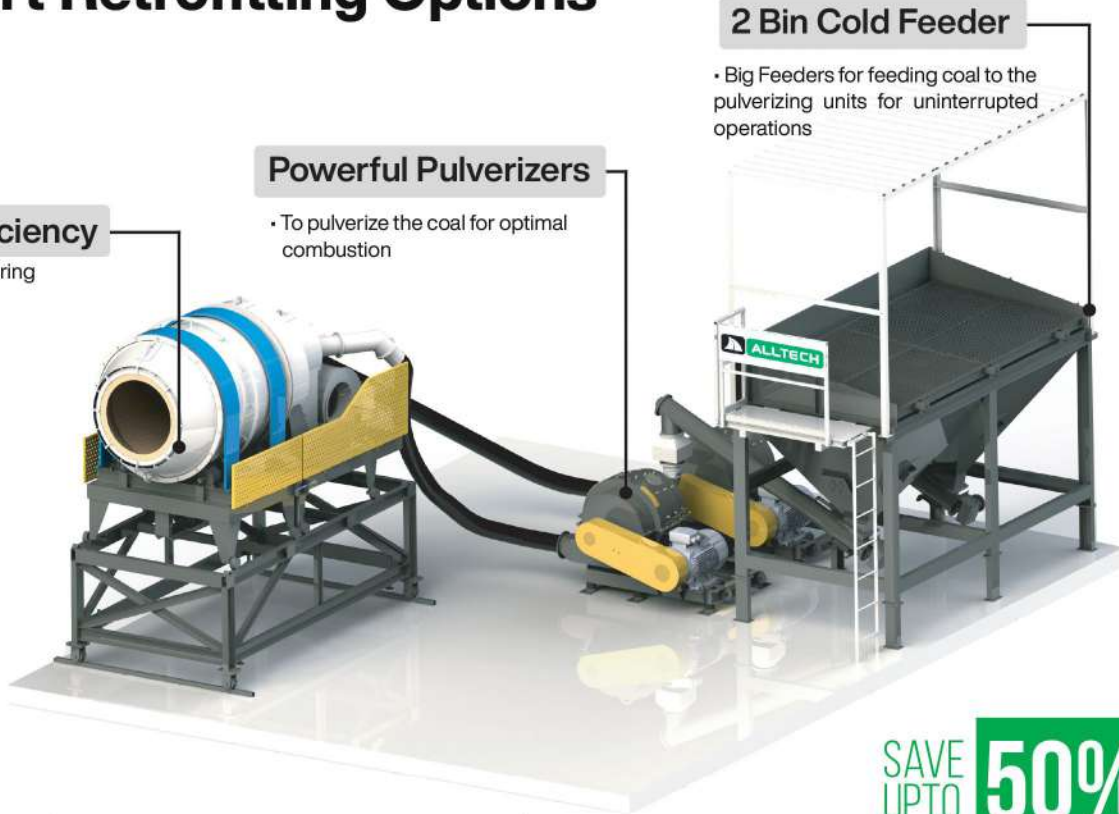
• With In-built LDO Firing mechanism

Powerful Pulverizers

• To pulverize the coal for optimal combustion

2 Bin Cold Feeder

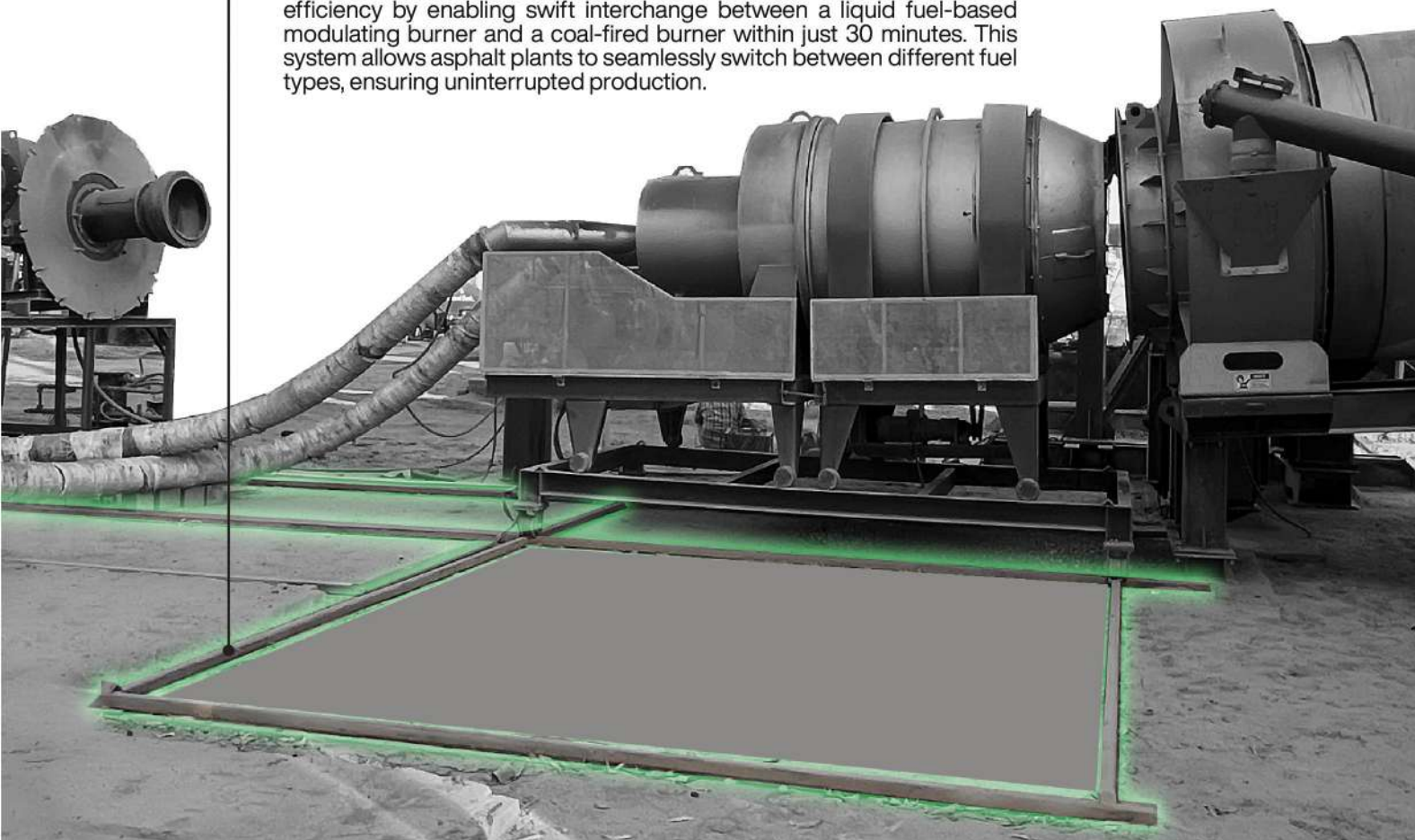
• Big Feeders for feeding coal to the pulverizing units for uninterrupted operations



SAVE UPTO **50% ON FUEL**

On-Rail Change Over System

Alltech's On-Rail Change Over System offers unparalleled flexibility and efficiency by enabling swift interchange between a liquid fuel-based modulating burner and a coal-fired burner within just 30 minutes. This system allows asphalt plants to seamlessly switch between different fuel types, ensuring uninterrupted production.



Recycling Maximized Cold & Hot RAP Attachments

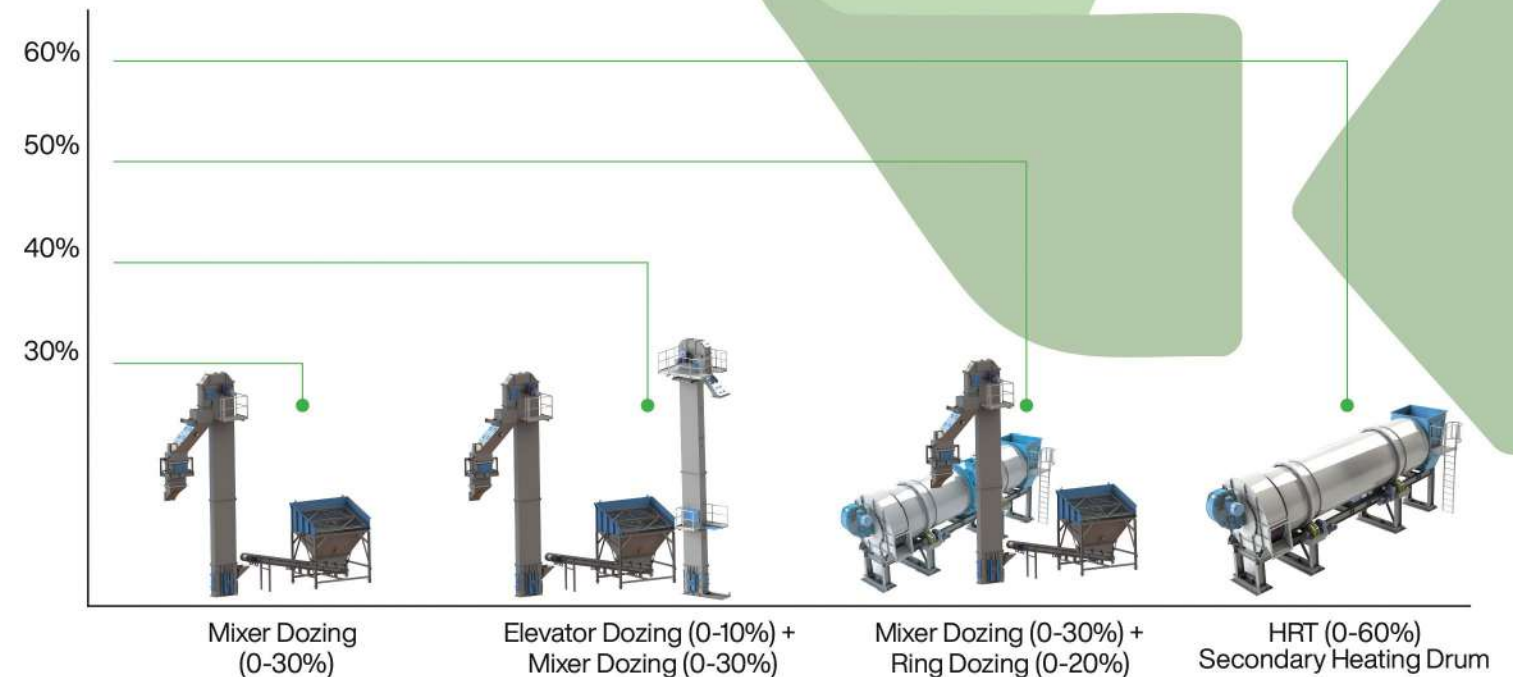
RAP SYNC For Optimum Efficiency
upto **60%** RAP Addition

At Alltech, we are committed to sustainability through asphalt recycling solutions that minimize waste and reduce the need for new materials. Our advanced technology allows for the recycling of up to 60% of reclaimed asphalt pavement (RAP), significantly lowering project costs while contributing to sustainability.

By incorporating RAP into the production of new asphalt mixes, we help reduce carbon emissions and conserve natural resources. Whether for road repairs or new constructions, Alltech's recycling systems ensure high-quality output while supporting greener infrastructure development. With sustainability at the core, we are driving the future of road construction through responsible, efficient, and eco-friendly practices.

Alltech offers advanced solutions for incorporating Reclaimed Asphalt Pavement (RAP), enabling contractors to achieve sustainability and cost efficiency. With the ability to incorporate RAC (Recycled Asphalt Cold Addition) up to 30% and RAC + RAH (Recycled Asphalt Hot) up to 50% & HRT to incorporate upto 60% RAP our plants are designed to maximize the reuse of materials while maintaining superior mix quality.

These innovative approaches not only reduce dependency on virgin aggregates but also lower project costs, aligning with eco-friendly practices. The capabilities are further illustrated below, showcasing our commitment to greener road construction solutions.



* RAP Addition is subject to RAP quality and moisture content in the RAP material.



RAH DRUM (RECLAIMED ASPHALT PAVEMENT - HOT ADDITION) + FEEDING SYSTEM:

With the ALLTECH hot recycling feed system, up to upto 20% Reclaimed asphalt cold material can be used from preparing hot mix via dryer RAP ring.

- Uses a dryer RAP ring for gentle heating and quality preservation.
- Gentle heating of recycled material in dryer drum.
- Can be combined with cold RAP system for more usage of recycled material as well as during plant operation.

Our innovative products, including the Coal Fire Burner and the Organic (Solid Fuel) Fire Thermic Fluid Heater, are designed to reduce costs, increase fuel flexibility, and minimize environmental impact. With a focus on quality, reliability, and customer satisfaction, we strive to be the leading provider of cost-saving attachments for the asphalt industry.

ORGANIC (SOLID FUEL) THERMIC FLUID HEATER:

- **Fully Packaged Design:** Our system is designed for complete installation requiring minimal site work.
- **Cycloidal Air Injection:** This innovative feature enhances residence time, minimizes excess air, and significantly reduces incomplete combustion losses.
- **High-Efficiency Design:** The system includes two concentric coils that create three flue passes, delivering exceptional efficiency.
- **Cost-Effective Erection:** Our design achieves a substantial reduction in erection costs, without requiring any extensive foundation work.
- **Minimized Radiation Losses:** The system's design leads to less exposed surface area. The thermic fluid circulating pump integrated into our system is a modern air-cooled type, eliminating the need for water cooling. It features a mechanical seal for maintenance-free operation and ensures zero leakage of thermic fluid.



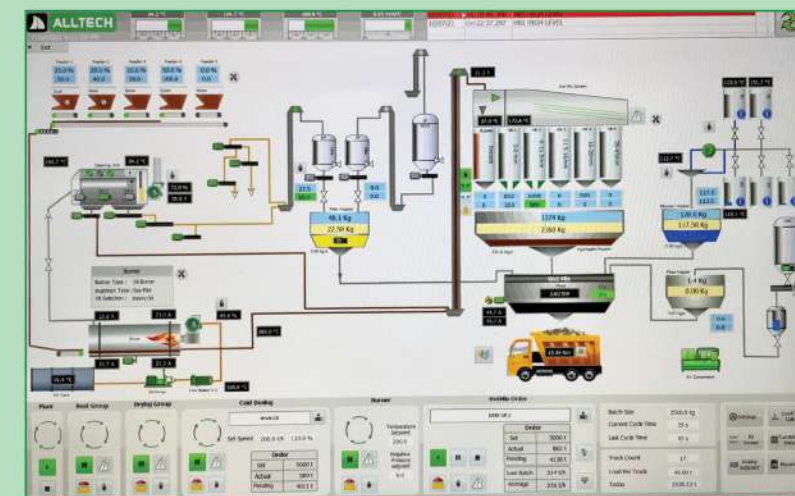
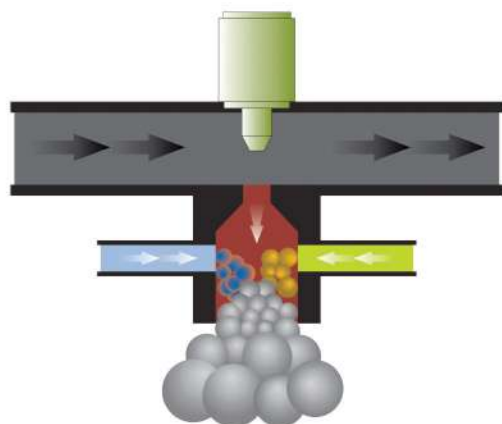
FIBER DOSING SYSTEM:

- Advanced Fiber Dosing System for asphalt batch mix plants.
- Ensures precise and consistent fiber addition.
- Supports fibers like cellulose, glass, or synthetic materials.
- Enhances asphalt performance and durability.



UNIFOAM SYSTEM (WARM MIX TECHNOLOGY):

- Lowers mix preparation and placement temperatures.
- Maintains low viscosity of liquid bitumen at reduced temperatures.
- Uses steam bubbles from water injection to reduce bitumen viscosity.



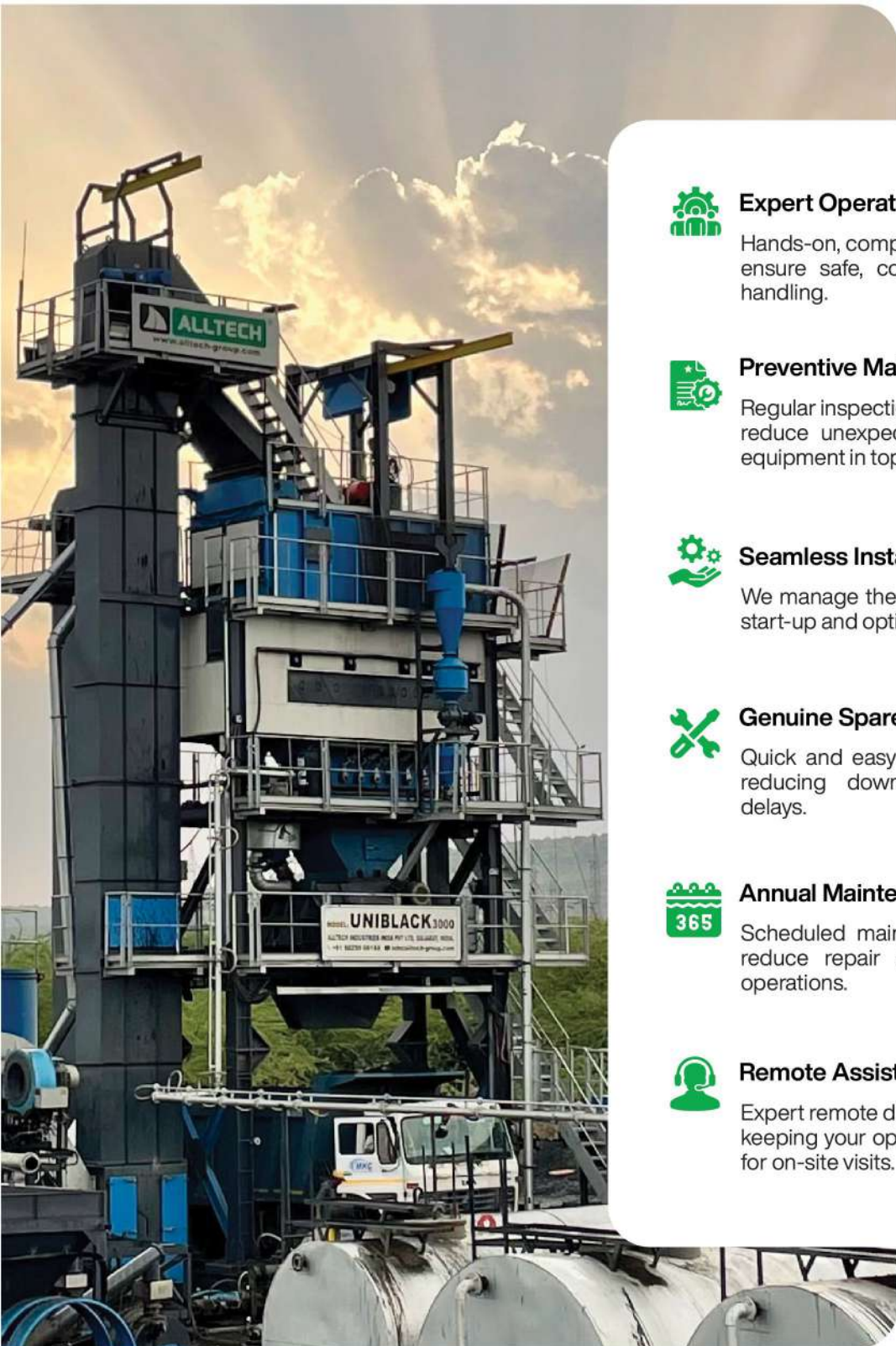
CYBERMIX™ OS SMART CONTROL FOR ASPHALT PLANTS

- Real-time control and monitoring for seamless plant operations
- Precision-driven automation for consistent mix quality
- Boosts productivity while minimizing downtime and errors

Alltech Services

Keeping Your Operations Running Smoothly

At Alltech, we believe that our relationship with customers extends beyond just providing high-quality equipment. Our Support Services are designed to ensure your operations run smoothly, with maximum efficiency, minimal downtime, and expert guidance at every step.



Expert Operator Training:

Hands-on, comprehensive training for your team to ensure safe, confident, and efficient equipment handling.



Preventive Maintenance:

Regular inspections, lubrication, and adjustments to reduce unexpected breakdowns and keep your equipment in top condition.



Seamless Installation & Commissioning:

We manage the complete setup, ensuring smooth start-up and optimized performance from day one.



Genuine Spare Parts Support:

Quick and easy access to Alltech-certified parts, reducing downtime and avoiding production delays.



Annual Maintenance Contracts (AMC):

Scheduled maintenance with priority support to reduce repair costs and ensure uninterrupted operations.



Remote Assistance & Troubleshooting:

Expert remote diagnostics to resolve issues quickly, keeping your operations on track without the need for on-site visits.

Technical Specifications:

PLANT CAPACITY AND PERFORMANCE

Plant Model	UNIBLACK 3000	UNIBLACK 4000
Plant Cap. @ 3% Moisture Content (t/h)	240	320
Batch Size (KG)	3000	4000
Cycle Time (sec)	45	45

FEEDING AND DRYING SYSTEM

Cold Feed Bins	No. of Bins	5	
	Capacity (M ³)	15	20
Charging Conveyor	Capacity	260	340
Dryer Drum	Model (L x D in m)	9 X 2.3	11 X 2.6
	Drive Type	4W Friction Drive	
UNIFLAME Modulating Burner	Type	Modulating Multi Fuel	
	Fuel Options	Liquid Fuels: LDO/FO/Diesel Gas Fuel: LPG/PNG/CNG Solid Fuel: Coal	
Coal Fired Burner (Optional)	Capacity (MW/Hr.)	18	22

TOWER UNIT

Hot Elevator	Max. Capacity	260	340
Screening Unit	Screening Method	Angular - Linear Vibration	
	No. of Deck	5+	
Hot Aggregate Bin	No. of Bins	5+	
Weighing Unit (Max)	Aggregate Hopper Capacity	3500	4500
	Filler Hopper Capacity	350	450
	Bitumen Hopper Capacity	350	450
Mixer Unit	Type	Twin Shaft Direct Driven Synchronized Mixer Unit	
	Batch Capacity	3000	4000
Pollution Control Bag House	Primary (Air Flow)	Cascade Type Pre-Separator	
	Secondary (Air Flow)	Bag-House Filter	
	Cleaning Mechanism	Reverse Air Cleaning Mechanism	
Control Panel	Type	Fully Computerised with Manual Over Ride	

OPTIONAL ACCESSORIES

Bitumen Tank	Capacity Range (MT)	30 & 50 (Cylindrical) 44 (Cuboidal for Export)	
	Type	Direct & Indirect Heating	
Thermic Heater (Diesel Fired)	Capacity Range (Kcal/Hr)	400000 500000 600000 1000000	
Thermic Heater (Organic Fired)	Capacity Range (Kcal/Hr)	500000 600000 800000 1000000	
Filler Silos	Capacity Range (M ³)	7 10 15 20	
Hot Mix Silo	Capacity Range (MT)	50 100 150	

As per Alltech's policy of continuous product upgrades, specifications are subject to change without prior notice. Output is based on standard ideal conditions.



Committed to Excellence Through Rugged, Robust & Reliable Solutions.



Asphalt Batch Mix Plant (80-320 TPH)



Counter Flow Drum Mix Plant (60-120 TPH)



Bitumen Drum Decanter (2-8 TPH)



Emulsion, CRMB, PMB Plants



Microsurfacing Machine



Bitumen Bag Decanter (4-6 TPH)



RDSO Steel Girders (Heavy Engineering)



ALLTECH INDIA LIMITED

(Formerly known as Alltech Industries India Private Limited & Alltech India Private Limited)

Head Office and Works:

Plot No. 62, At. Geratpur Patiya, Ahmedabad - Patan Highway Road, Near Saffrony Resort,
Mehsana, Ditasan, Gujarat - 382710, India



+91 89800 05313 | +91 98250 06188

info@alltech-group.com

www.alltech-group.com